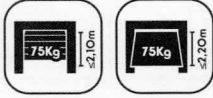


**EN** Motor unit  
For garage door

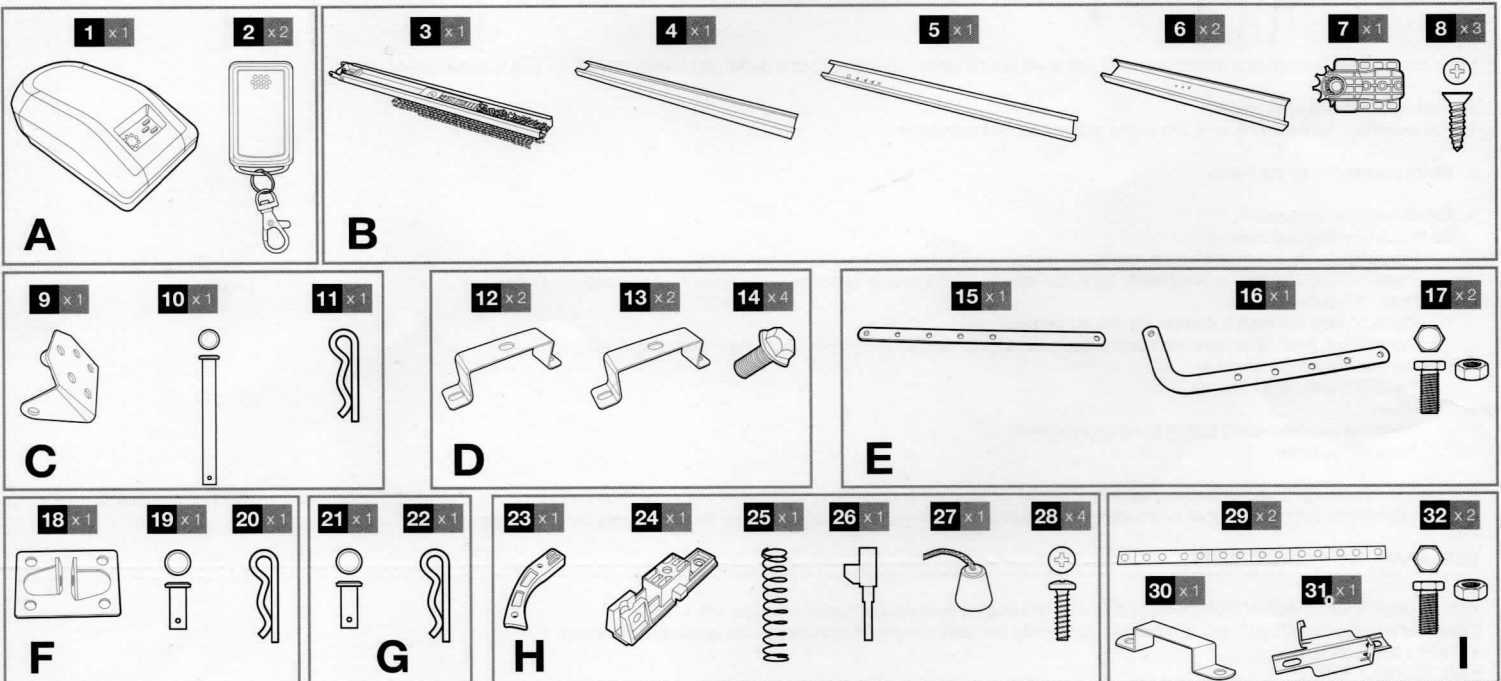
**QUICK START GUIDE**



This document is a quick start guide detailing the main installation steps as well as the equipment required.

**Warning:** The safety instructions and installation instructions can be found in the installation manual. Follow all these instructions, as an incorrect installation can cause serious injuries.

**CONTENTS OF THE KIT**



**33 x1** **34 x1** **35 x1**

**MISE EN GARDE:**  
Risque d'écrasement.  
Vérifier régulièrement, et régler si nécessaire, pour s'assurer que la porte inverse son mouvement lorsqu'elle rencontre un objet de 50 mm de haut placé sur le sol.

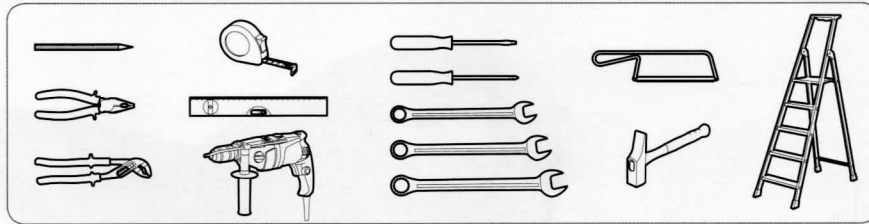
<b>A</b>	<b>MOTOR</b>
1	Motor unit
2	Remote control
<b>B</b>	<b>RAIL</b>
3	Front part of the rail
4	Central part of the rail
5	Rear part of the rail
6	Rail junction
7	Sprocket wheel
8	Screw to fasten the chain

<b>C</b>	<b>RAIL/WALL MOUNTING KIT</b>
9	Wall mounting bracket
10	Rail fastening pin with wall mounting
11	Pin
<b>D</b>	<b>MOTOR/RAIL MOUNTING KIT</b>
12	Rail mounting bracket 1
13	Rail mounting bracket 2
14	Rail/motor unit fastening nut
<b>E</b>	<b>ARM</b>
15	Right part of the arm
16	Bent part of the arm
17	Screw and nut to assemble the arm
<b>F</b>	<b>ARM/DOOR MOUNTING KIT</b>
18	Door mounting bracket
19	Arm fastening pin with door mounting
20	Pin
<b>G</b>	<b>ARM/SLIDE MOUNTING KIT</b>
21	Pin to fasten the arm onto the slide
22	Pin

<b>H</b>	<b>MANUAL OVERRIDE KIT</b>
23	Manual override system
24	Manual override slide
25	Manual override spring
26	Manual override metal part
27	Rope
28	Manual override system fixing screw
<b>I</b>	<b>CEILING MOUNTING KIT</b>
29	Ceiling hook
30	Ceiling mounting bracket
31	Ceiling hook
32	Screw and nut to assemble the ceiling mount
<b>J</b>	<b>WARNING LABELS</b>
33	Safety
34	Risk of crushing
35	Maintenance warning

## EQUIPMENT REQUIRED (NOT SUPPLIED)

The tools and screws required for the installation must be in good condition and compliant with applicable safety standards.



## INSTALLATION

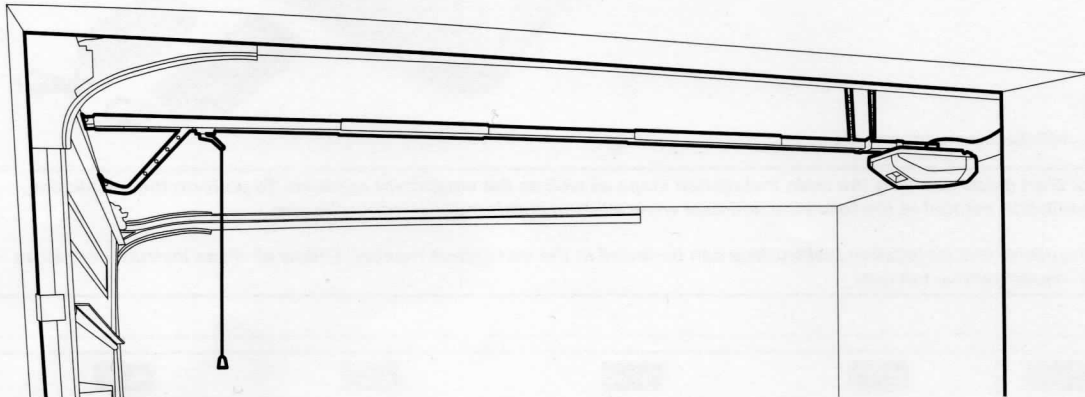


**Safety guidelines: please refer to the installation manual for all safety instructions.**

**To perform the installation, please download the installation manual at the following address: [www.avidsen.com/produits/recherche.php](http://www.avidsen.com/produits/recherche.php)**



**Overview:** (inside the garage)



Make sure there is enough space available and that there are no obstacles (pipes, cable ducts, etc.) where the motor unit is to be installed.

The installation is a 4-step process:

1. Rail assembly, rail assembly onto the motor unit, motor unit installation.
2. Motor connection to the mains.
3. Adjustments and operation:
  - Setting of opening and closing:
    - Press "P" once
    - Press "+" until the door is completely open and release. (If the door is open too wide, close it by pressing "-" a little)
    - Press "P" once
    - Press "-" until the door is completely closed and release.
    - Press "P" to finish. The door then opens and closes automatically to verify the opening and closing positions.
  - Programme the remote controls:
    - Press "P" until LED 7 flashes
    - Press "+"
    - Press the remote control button to be programmed
    - Press "P" to finish.
4. Operational testing: To familiarise yourself with the automatism and ensure its proper operation, read the chapter on usage and conduct operational tests (opening/closing, initiate obstacle detection, cut the photocell beam (optional)). Upon completion of these tests, you may have to modify certain settings (e.g. motor power).

## DECLARATION OF CONFORMITY

With the R&TTE directive AVIDSEN declares that the following equipment: Garage door motor unit 114957  
Complies with the R&TTE 99/5/EC directive. Its conformity has been assessed pursuant to the applicable standards in force:

- EN 301489-3 V1.6.1
- EN 301489-1 V1.9.2
- EN 300220-1 V2.4.1
- EN 300220-2 V2.4.1
- EN 62479 :2010
- EN 60335-1 :2012 + A11 :2014
- EN 60335-2-95 :2015

The remote control included with the abovementioned product complies with the R&TTE 99/5/EC directive. Its conformity has been assessed pursuant to the applicable standards in force:

- EN 301489-3 V1.6.1
- EN 301489-1 V1.9.2
- EN 300220-1 V2.4.1
- EN 300220-2 V2.4.1
- EN 60950-1 :2006 + A11 :2009+A1 :2010+A2 :2013

Chambray les Tours, date: 20/12/15  
Alexandre Chaverot, CEO